

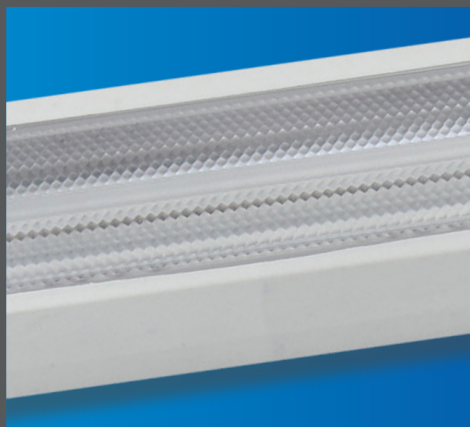
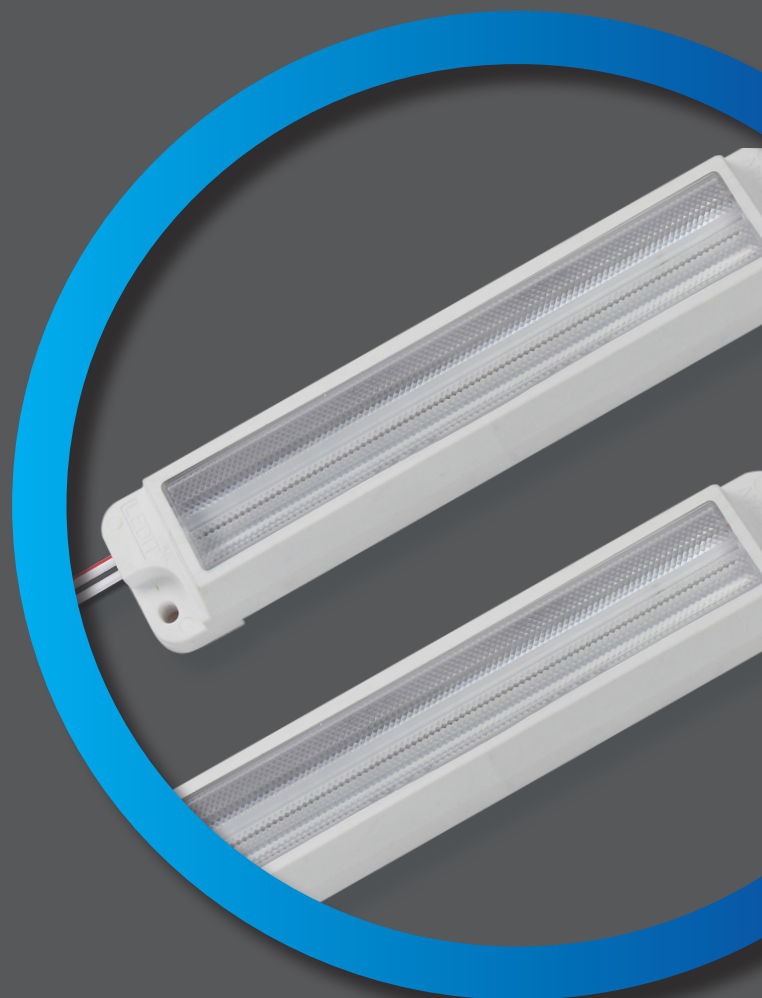
ModulBox Linear 700

Signage – Light Box

7 YEARS
70.000 hrs
L70

Modular **EDGE** solution to illuminate surfaces from the **sides or perimeter**

- ▶ New lens concept for perfect homogeneity for double side box sign
- ▶ Up to 700lm / modules
- ▶ Up to 97lm/w efficiency
- ▶ 16 modules per chain



FEATURES & BENEFITS

- Flexible solution with 16 modules per chain of 700 lumens per module. Easy to adapt the brightness to the application requirements
- Various White color temperatures to deliver true brand identity and appealing images. Choose between Warm, Neutral or Daylight White
- IP67 Design for indoor and outdoor Application
- High Efficiency: up to 97 lm/W modules
- DC 24V
- High quality 3M 4945 tape for reliable fixation
- 100% aging tests
- Wide operating temperature from -20°C to + 50°C

NORMS & CERTIFICATES

- EN 55015: 2013+A1:2015
- EN 61547:2009
- EN 61000-3-2:2014
- EN 61000-3-3:2013



LIFETIME & WARRANTY

- Warranty: 7 years
- lifetime: 70,000 hrs at L70

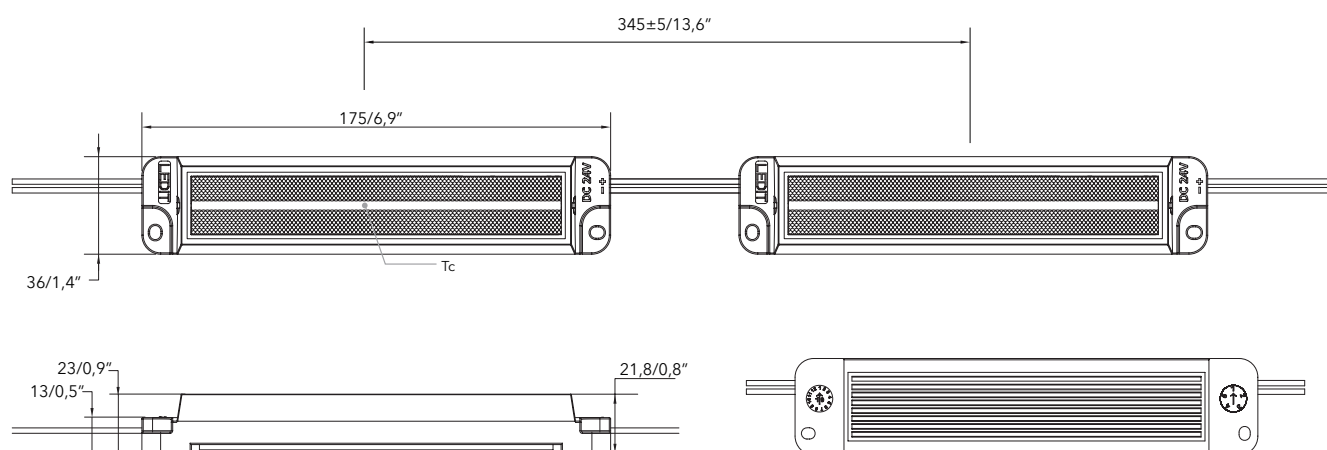
TECHNICAL DATA

Code	Designation	Col- or	Color- Temp (K)	Optic (°)	Volt- age (V)	Typical power/ mod (W)	Lumen output (lm/ mod)	Effi- ciency (lm/W)	Mod- ules / chain	Modules max in series	Module distance - axe to axe (mm/ft)
20880116	ModulBox Linear 700 WDL 11x77° 16mod 7.2W 24V IP67	WDL	6000-7000	11x77	24	7,2	700	97	16	16	345±5/1,1'
20880117	ModulBox Linear 700 NW 11x77° 16mod 7.2W 24V IP67	NW	3700-4200	11x77	24	7,2	700	97	16	16	345±5/1,1'
20880118	ModulBox Linear 700 WW 11x77° 16mod 7.2W 24V IP67	WW	2700-3200	11x77	24	7,2	700	97	16	16	345±5/1,1'

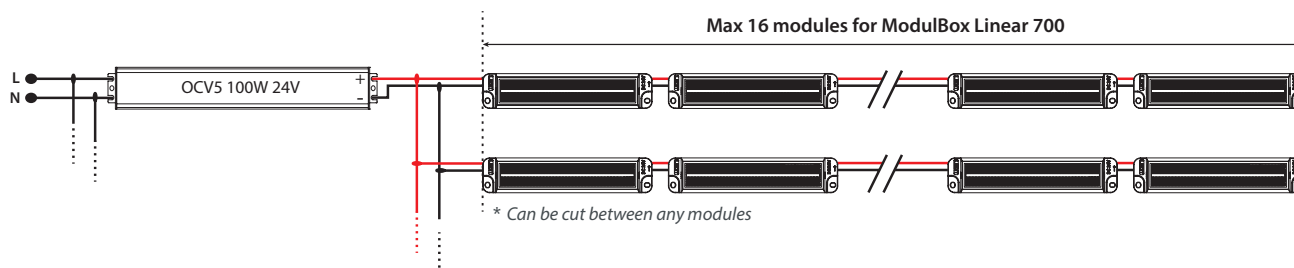
*Tolerance range for optical and electrical data: ±15 %.

DIMENSION

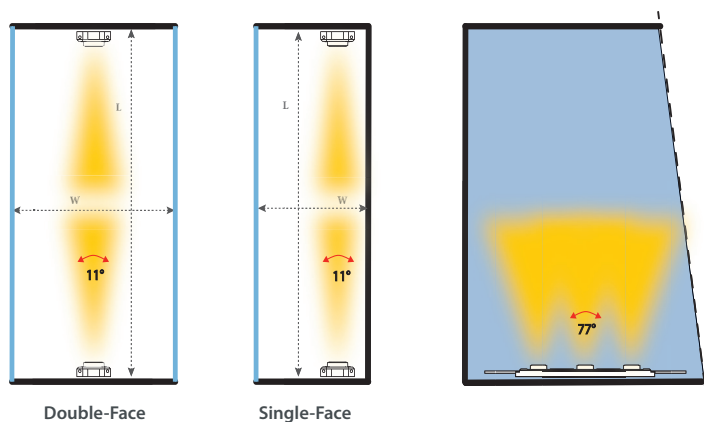
ModulBox Linear 700



WIRING DIAGRAM



APPLICATION EDGE LIGHTING



Optimum uniformity.



Frequent use. Results depend on face materials.
Please test.



Test required. Results depend of overall application. ModulBox Mono could be the best solution.

Recommendation Matrix - ModulBox Linear 700 WDL 11x77° per type of light boxes

Depth of the light box

Length	Height	100mm Double-Face Box		120mm Double-Face Box		150mm Double-Face Box		200mm Double-Face Box		250mm Double-Face Box	
		80 mm Single-Face Box		100 mm Single-Face Box		120 mm Single-Face Box		150 mm Single-Face Box		200 mm Single-Face Box	
		Nb of mod / box	Lumen & Power/ box	Nb of mod / box	Lumen & Power/ box	Nb of mod / box	Lumen & Power/ box	Nb of mod / box	Lumen & Power/ box	Nb of mod / box	Lumen & Power/ box
100 0 mm	200 mm	6 modules	4200 lm	6 modules	4200 lm	4 modules	2800 lm	4 modules	2800 lm	4 modules	2800 lm
		in 1 Side	42,3 W	in 1 Side	42,3 W	in 1 Side	28,8 W	in 1 Side	28,8 W	in 1 Side	28,8 W
	400 mm	6 modules	4200 lm	5 modules	4200 lm	4 modules	2800 lm	4 modules	2800 lm	4 modules	2800 lm
		in 1 Side	42,3 W	in 1 Side	42,3 W	in 1 Side	28,8 W	in 1 Side	28,8 W	in 1 Side	28,8 W
	600 mm	2x 5 modules	7000 lm	2x 5 modules	7000 lm	2x 4 modules	5600 lm	2x 4 modules	5600 lm	2x 4 modules	5600 lm
		in 2 Sides	72 W	in 2 Sides	72 W	in 2 Sides	57,6 W	in 2 Sides	57,6 W	in 2 Sides	57,6 W
	800 mm	2x 5 modules	7000 lm	2x 5 modules	7000 lm	2x 4 modules	5600 lm	2x 4 modules	5600 lm	2x 4 modules	5600 lm
		in 2 Sides	72 W	in 2 Sides	72 W	in 2 Sides	57,6 W	in 2 Sides	57,6 W	in 2 Sides	57,6 W
	1000 mm	2x 5 modules	7000 lm	2x 5 modules	7000 lm	2x 5 modules	7000 lm	2x 5 modules	7000 lm	2x 5 modules	7000 lm
		in 2 Sides	72 W	in 2 Sides	72 W	in 2 Sides	72 W	in 2 Sides	72 W	in 2 Sides	72 W
	1200 mm	2x 5 modules	7000 lm	2x 5 modules	7000 lm	2x 5 modules	7000 lm	2x 5 modules	7000 lm	2x 5 modules	7000 lm
		in 2 Sides	72 W	in 2 Sides	72 W	in 2 Sides	72 W	in 2 Sides	72 W	in 2 Sides	72 W
Uniformity		★★★★★		★★★★★		★★★★★★		★★★★★★		★★★★★★	

*Data and dimensions are given as recommendations based on standard acrylic PMMA or flexible Face. Tests are always required for final confirmation. Always make a test or prototype to confirm results for your specific project.

INGRESS PROTECTION IP67

- Module is an "inbuilt LED module" designed to be used Indoors and Outdoors applications
- The specified environmental protection of the LED module enclosure means that it is totally protected against dust, and protected against the effect of water immersion up to 1 mtr. The certification requires products to pass a test 30 minutes long at 1 mtr. below the surface of water. After 30 minutes of submersion product could start to be affected or damaged.
- Make sure the application (sign, box, etc.) where the LED modules are installed into, has proper holes for water to exit so that LED modules and any other electronic components are not submerged exceeding the IP67 certification limits.

THERMAL BEHAVIOUR

The temperature limits indicated below are expressed in °C, at full load, after 3 hrs of operation conditions, with natural convection:

- Operation temperature Ta -20° to +50°C
- Storage temperature Ts -20° to +60°C
- Max. temperature tc point Tc +110°C

The life of the module will decrease when the maximum temperature limits are exceeded.

If LEDs are operated for a continuous extended time at temperatures that exceed the maximum limits, the modules can fail.

Our Warranty will be void when LED modules are operated exceeding the maximum values indicated.

INSTALLATION

- Always connect the LED modules to the power supply while it is OFF. Only then you can connect the power supply to electricity and turn it ON.
- Respect the maximum number of modules in a row.
- Check compatibility between LED and driver voltage.
- Install LED on a clean work station connected to the earth. All LEDs are sensitive to static electricity (ESD).
- Limit the cable length between LED and power supply (voltage drop).
- Do not make direct pressure on LED chip, this could damage the internal connection.
- Secure LED module lines with mechanical fixation (screws, glue ...) in addition to the adhesive tape.

PACKAGING

	Types	SIZE- LxWxH (cm)	SIZE- LxWxH (ft)	Weight (kg)	Weight (lb)	Nb of Chains / box
Carton	ModulBox Linear 700	52x35x21	1,7x1,1x0,7	12,4	27,3	6