

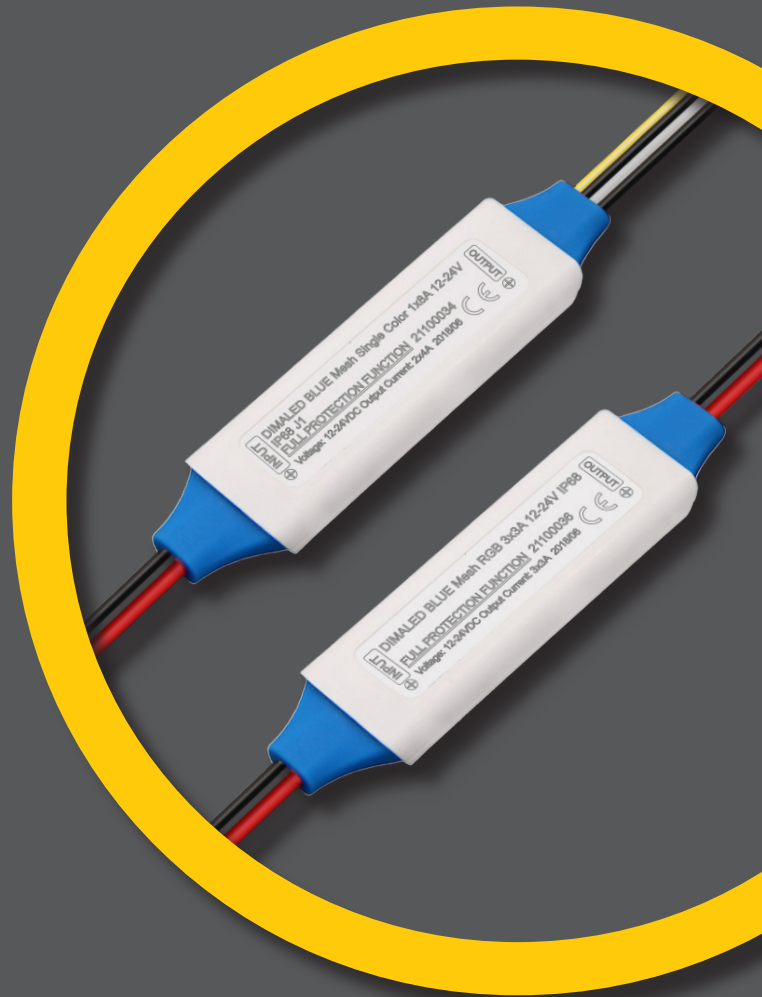
# DIMALED BLUE Mesh

LED Control System

**2** YEARS  
50.000 hrs  
IP68

**DIMALED BLUE Mesh is  
ideal for IoT LED solution**

- ▶ Reliable technology connects up to 255 pieces devices
- ▶ Clock with backup battery
- ▶ IP68. Covers 15 mtr-area
- ▶ Monochromatic, RGB, RGBW or Tunable White
- ▶ Up to 42 dynamic modes
- ▶ Create easily your own color



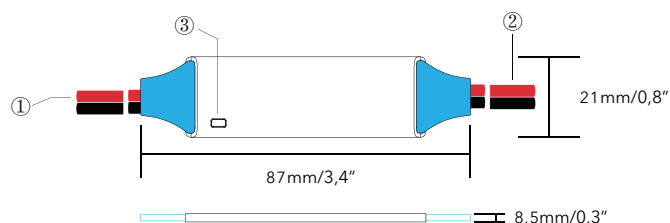
## FEATURES & BENEFITS

- The control ideally suited for IoT LED solutions because it can connect up to 255 devices
- PWM constant voltage controller
- IP68 design for outdoor and indoor use
- Timing function available with back up battery in case of temporary power out
- 12-24V Voltage Range
- Up to 42 dynamic and static color modes. Create your own color
- Flicker Free
- Overload protection
- Overheat protection

## LIFETIME & WARRANTY

- Warranty: 2 years
- Lifetime: 50.000 hrs

## DIMENSION



1. Power supply Input (DC 12-24V)
2. LED Output
3. Bluetooth Indicator

## NORMS & CERTIFICATES

- EN 62479:2010
- EN 62368-1:2014+A11:2017
- ETSI EN 301 489-1 V2.2.0 (2017-03)
- ETSI EN 301 489-17 V3.2.0 (2017-03)
- EN 300 328 V2.1.1:2016-11



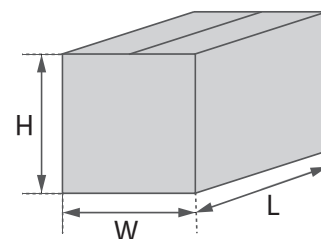
## APP DOWNLOAD



\*Please search APP name "Light Mesh" in Apple's APP store or Google Play market if you could not scan the QR codes.

## PACKAGING

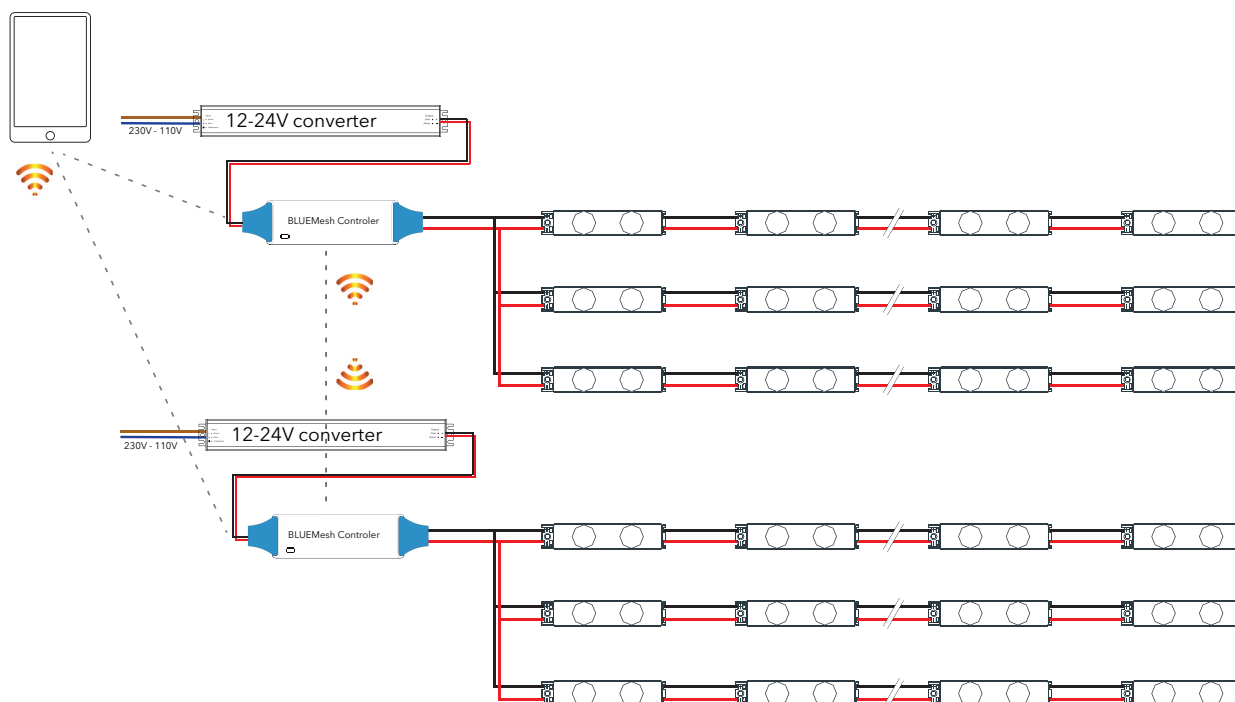
	Type	SIZE - Lx-WxH (cm)	SIZE - LxWxH (ft)	Weight (Kg)	Weight (Lb)	Nb of Pcs / box
CARTON	DIMALED BLUE Mesh	33x26x28	1,3x1,0x1,1	5,2	11,5	100



## DIMALED BLUE Mesh

Model	DIMALED BLUE Mesh Single Color 1x8A 12-24V IP68	DIMALED BLUE Mesh Tunable White 2x4A 12-24V IP68	DIMALED BLUE Mesh RGB 3x3A 12-24V IP68	DIMALED BLUE Mesh RGBW 3x2A+3A 12-24V IP68
Code	21100034	21100035	21100036	21100037
Working Voltage	DC 12-24V			
Rated Output Current	1x8A	2x4A	3x3A	3x2A +3A
Dynamic mode	9 modes	NA	42 modes	42 modes
Connection Method	Bluetooth V4.0 and up, with mesh feature			
Support Smartphone	iPhone 4S or with Android 4.3 above			
Physical PWM level	4000 levels			
App Program	Light Mesh			
Overload protection	Yes			
Overheat protection	Yes			
Power off memorizing	Yes, including on/off status			
Output adjust range	0-100% with gamma correction			
Connecting Distance	>15 meters (open area)			
Working Temperature	-30 to +50°C			
IP Grade	IP68			
Dimension	87x21x8.5mm			
Weight	33g			

## WIRING CONCEPT



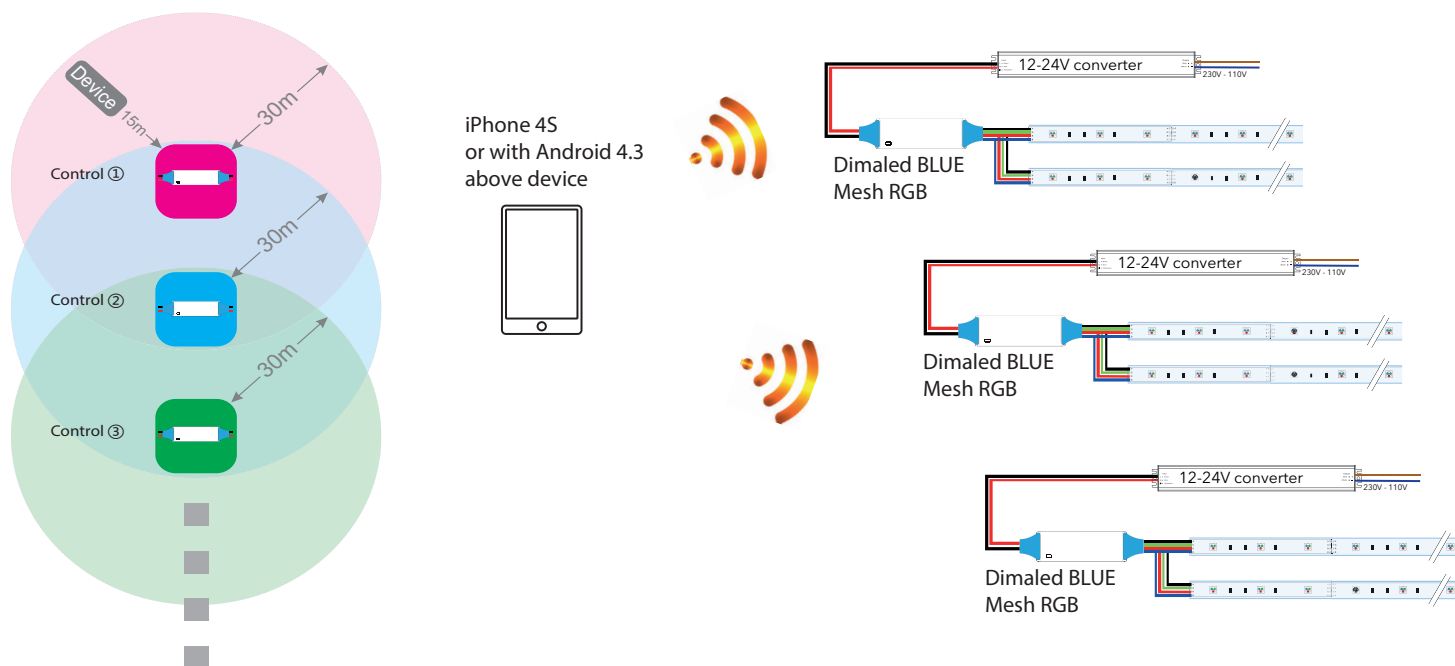
## DIAGRAM CONCEPT

DIMALED BLUE Mesh series is a one-to-multiple LED controller families.

With the mesh connection technology, one smart phone can connect to multiple controllers simultaneously. The controllers will expand the connection automatically.

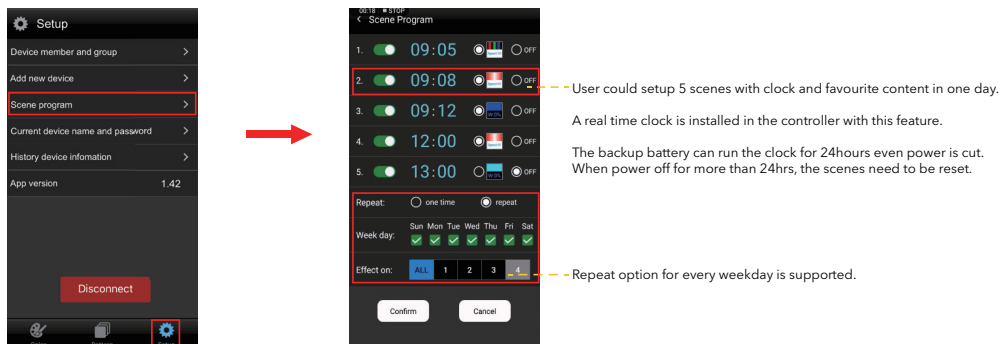
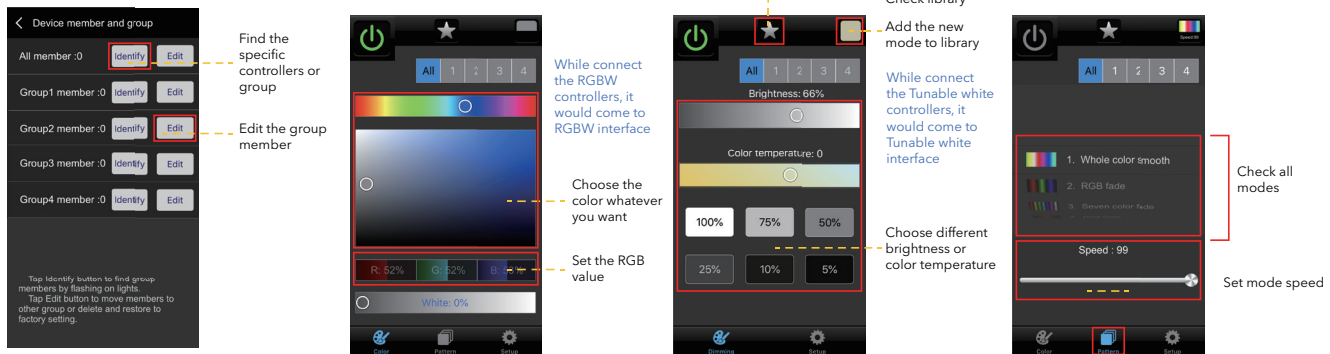
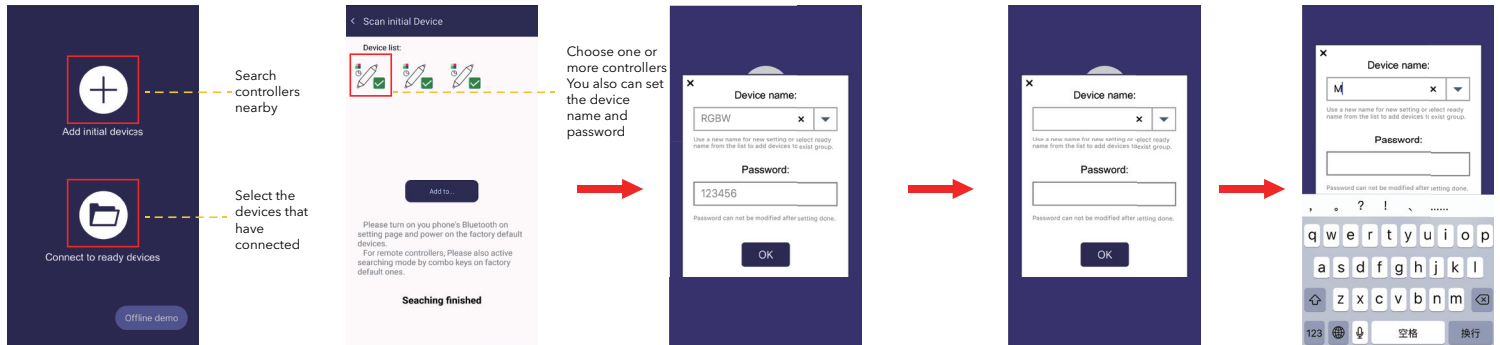
The BLUE Mesh controller signal can cover a range of 30 meters open area.

There are 4 models of DIMALED BLUE Mesh controller , from single color, tunable white, RGB, RGB + White  
With different paired remote controller.



## APP MODE

How to set name & password



## NEW FUNCTIONS:

